

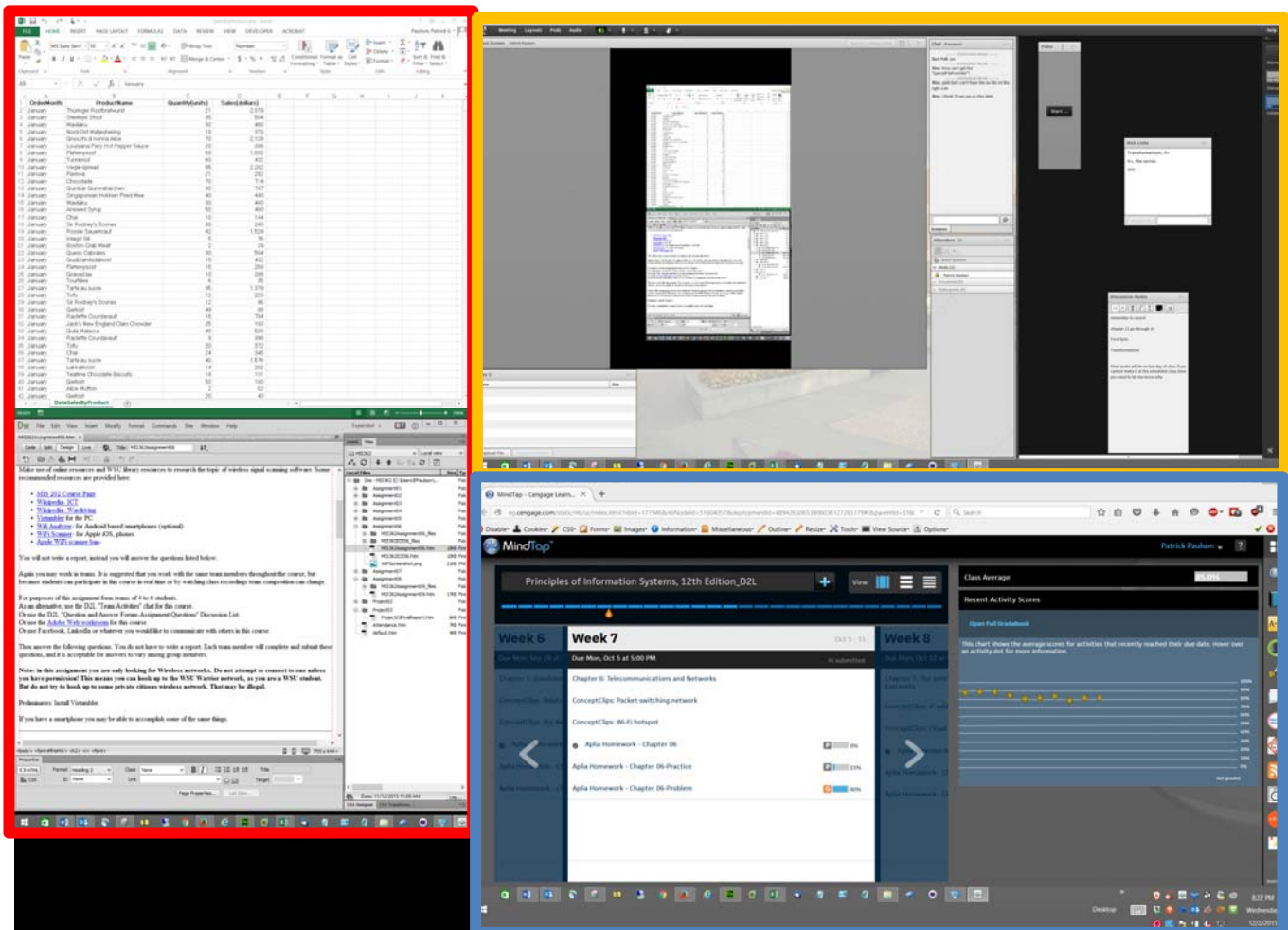


# Using External Monitors in Somsen 301

## Overview

Somsen 301 is equipped with dual external LCD monitors for the instructor and each of the students to increase your productivity. This arrangement permits you to display different applications on each monitor.

External monitors promote the use of multiple applications such as video conferencing, web browsers and eBooks. For example- the eBook is displayed on one LCD monitor, the spreadsheet application is displayed on another and the web video conferencing is on the third LCD monitor. The mouse moves freely between screens.



Three monitors, outlined in red, orange and blue.

When using LCD projectors or video conferencing screen sharing you can have a 'public' and 'private' display. The primary laptop display can be private, viewable only by the user. The external LCD monitor and the ceiling mounted LCD projector both display the same 'public' image. This allows the user to view class notes, email, Desire2Learn information or such privately on their laptop. Note that the user can still use their laptop and LCD projector to display the same image as is done now, and disregard the external LCD monitor. This is known as 'mirroring'.



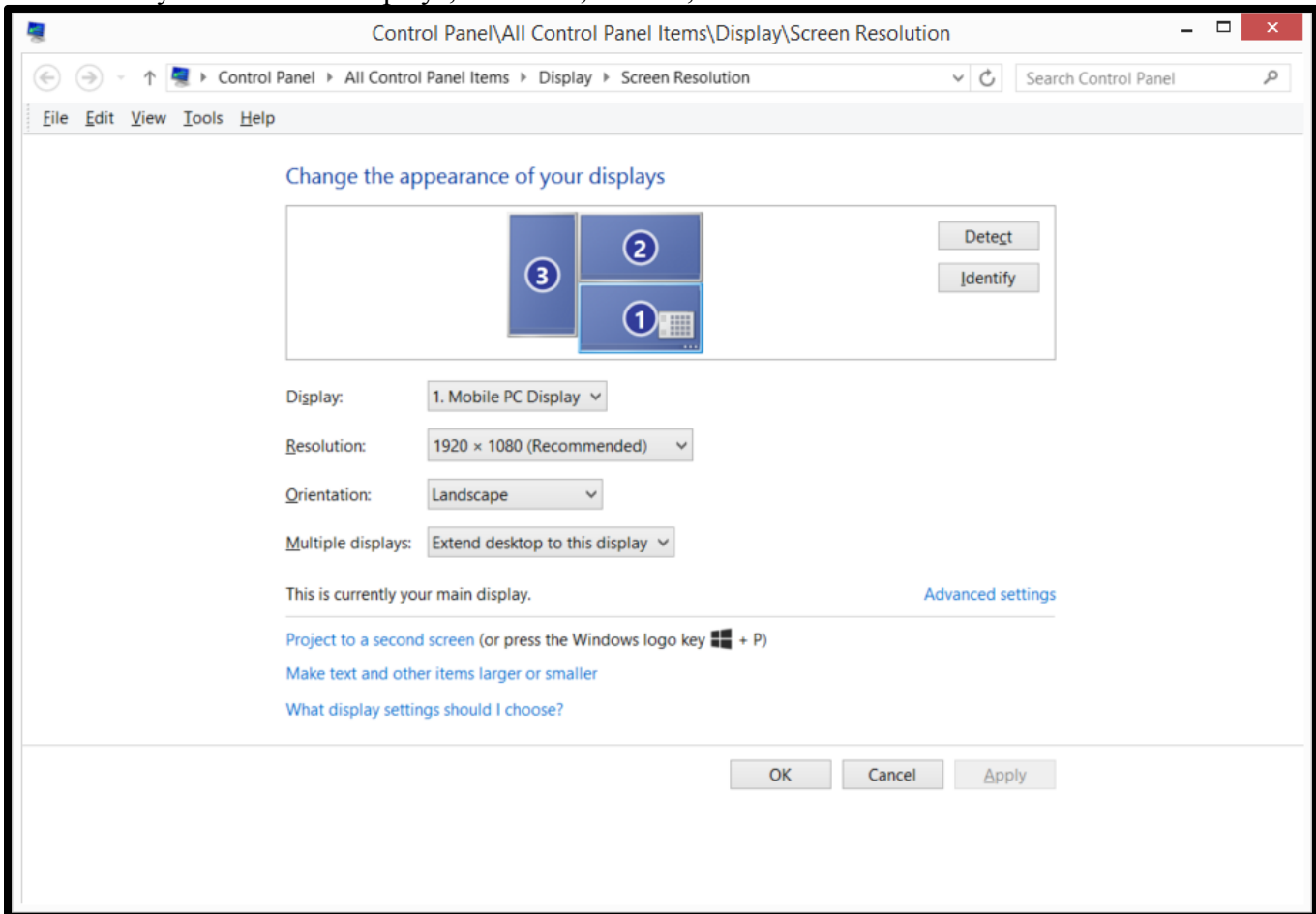


## Configuring Dual External Monitors

1. Click 'Show Desktop' at the extreme right of the Task Bar.
2. Right click a blank area of the desktop, choose "Screen Resolution"



3. Make sure you have three displays, marked 1, 2 and 3, as shown.





4. Click the 'Identify' button. Monitor 1 must be your laptop screen and monitors 2 and 3 must be the external monitors. If not, you need to adjust which monitor is your main display until this is the case.
5. Select the Monitor 2 icon.
6. Under 'Multiple displays:' check the box "Extend my Windows desktop onto this monitor" and click "Apply". This setting is important to check if one of the external monitors is greyed out.
7. Select the Monitor 3 icon and repeat this step.
8. Click and drag the monitor icons to match the physical arrangement of your monitors.
9. You may need to adjust the screen resolution.
  - a. The two monitors in Landscape Orientation should be set to 1920 x 1080
  - b. The external monitor in Portrait Orientation should be set to 1080 x 1920

### **Disabling Dual Monitors**

1. Disconnect the cables to the external monitors.
2. If your computer does not adjust to single monitor mode using just your laptop screen, toggle the Windows+P buttons until you have selected "Disconnect Projector".
3. If all else fails, disconnect the external monitors and reboot your computer.

### **Potential Issues**

There are several potential issues that may arise from using an external monitor.

1. Desktop icons may be rearranged, and may not return to their original position when you return to single screen mode.
2. When working with an external monitor, when you make a screen shot ( Fn+PrtSc) you will capture all screens. In order to capture only the active window also press the 'Alt' key. (Fn+Alt+PrtSc).
3. HP- Windows+P toggles between available monitor configurations.

For a Mac, use these hints, from: <http://eduscapes.com/tap/topic7.htm>

Press Command (Apple)-Shift-4. The pointer turns into a bull's eye.

Select the area of the screen you wish to capture. The screen is captured and saved as a PDF file called Picture 1 on your hard drive.

If you hold down the Control key in addition to the Command (Apple)-Shift-4 while clicking the bull's eye, the image is stored on the clipboard.

Macs can only make use of one external monitor, and you will need to procure an adapter.

### **Assistance**

If you need classroom assistance please call **Support at 507-457-5240**.

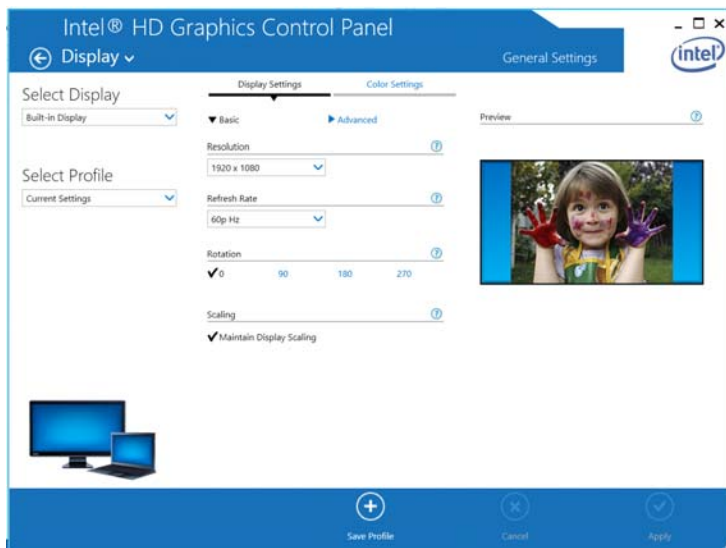




### Intel HD Graphics Setup

If setting up the dual external monitors using the Windows Control Panel Screen Resolution dialog box results in monitors 2 and 3 being identified improperly then you need to start the Intel HD Graphics setup program by typing "Intel HD Graphics" in the Windows Start Screen.

1. Press Display, you will be presented with information on each connected display.



2. In the top left click the down arrow to the right of 'Display' and select 'Multiple Displays'. You will be presented with a screen depicting the current monitors and the arrangement. At the screen you can correct the monitor arrangement, rotate the displays as needed, then save the Profile as 'Somsen301'. Once you reboot your laptop the control panel resolution should match the Intel HD Graphics arrangement, with the same monitor numbering scheme.

