



Using External Monitors in Somsen 301

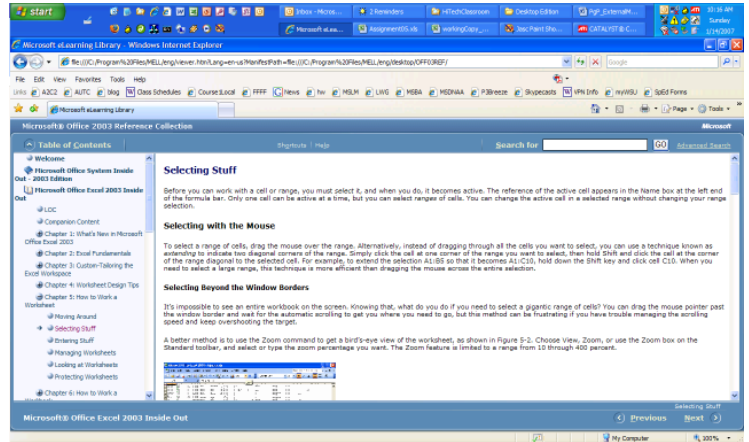
Overview

Somsen 301 is equipped with external LCD monitors for the instructor and each of the students to increase your productivity. Each person has the benefit of displaying applications on two separate screens.

The external monitor accommodates the use of eBooks by allowing each LCD monitor to display a separate application. For example-in discussing spreadsheets the eBook is displayed on one LCD monitor, and the spreadsheet application is displayed on the other LCD monitor. The mouse moves freely between screens.

	A	B	C	D	E	F	G	H	I
1									
2		count		28					
3		counta		18		Search minutes		5	
4		countblank		2		average		3.48	
5		Eminem		114					
6		Cher	112	Song Nur Singer	Date	Minutes			
7		Moore	131	1	Eminem	5/21/2004		4	
8		Spears	129	2	Eminem	4/15/2004		2	
9		Mellencamp	115	3	Cher	1/28/2005		2	
10		Madonna	133	4	Eminem	1/28/2005		4	
11		Springsteen	103	5	Moore	11/5/2004		2	
12		Manilow	114	6	Cher	9/18/2004		4	
13		Total	951	7	Spears	4/15/2004		3	
14					8	Spears	3/17/2005	3	
15		837 Not by Eminem	837	9	Manilow	1/16/2005		4	
16		230 Songs >= 4 minutes	477	10	Eminem	4/10/2005		4	
17		Songs longer than average	477	11	Madonna	2/15/2004		3	
18		Singer begins with S	232	12	Eminem	1/10/2004		4	
19		Singer has six letters in name	243	13	Springst	4/10/2005		2	
20		Songs after 8/15/2005	98	14	Spears	4/15/2004		4	
21		Songs Before 2009	951	15	Moore	7/8/2004		3	
22		Career diversity (8 min:48s)	217	16	Madonna	8/26/2004		4	

External LCD Monitor-Monitor 2



Laptop LCD Screen-Monitor 1

Other benefits include viewing multiple applications and enhancing the use of videoconferencing.

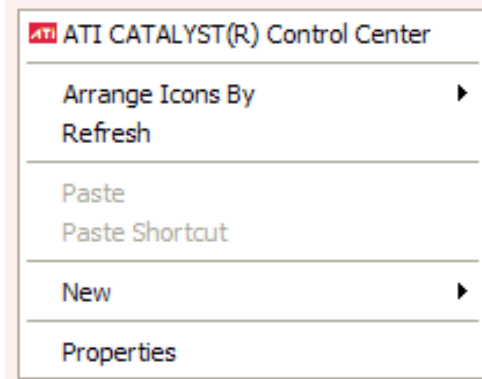
The instructor has a 'public' and 'private' display. The primary laptop display will be private, viewable only by the instructor. The instructor external LCD monitor and the ceiling mounted LCD projector both display the same 'public' image. This allows the instructor to view class notes, email, Desire2Learn information or such privately on their laptop. Note that the instructor can still use their laptop and LCD projector to display the same image as is done now, and disregard the external LCD monitor. This is known as 'mirroring'.



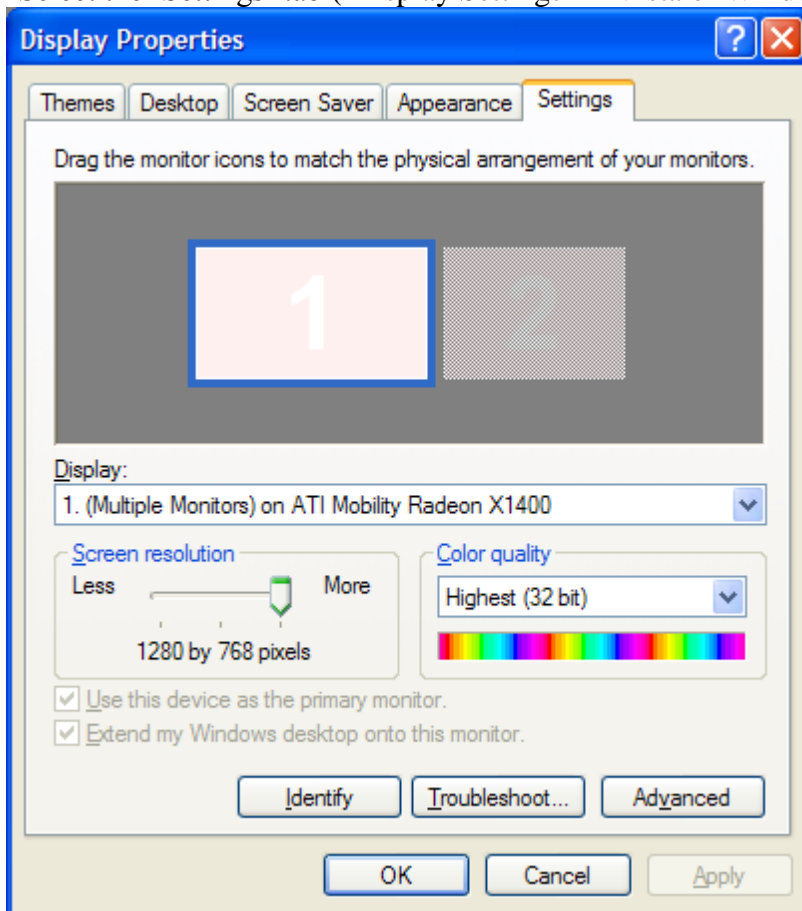


Configuring Dual Monitors

1. Click 'Show Desktop' from Quick Launch Bar.
2. Right click a blank area of the desktop, choose properties ('Personalize' in Vista or Windows 7)



3. Select the 'Settings' tab ('Display Settings' in Vista or Windows 7)



4. Click the 'Identify' button. Monitor 1 must be your laptop screen and monitor 2 must be the external monitor. If not, you need to toggle your graphics output (Fn+F4) until this is the case.
5. Select the Monitor 2 icon.
6. Then check the box "Extend my Windows desktop onto this monitor" and click "Apply".

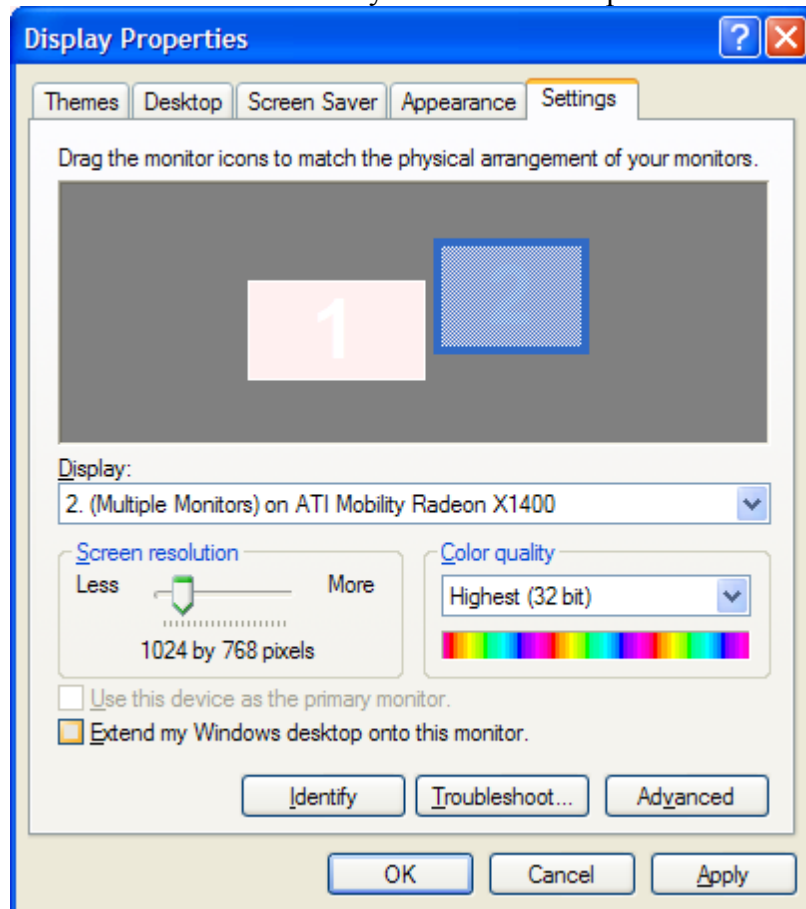


Using External Monitors in Somsen 301

7. Click and drag the monitor icons to match the physical arrangement of your monitors.
8. You may need to adjust the screen resolution.
 - a. The current laptops should be set to 1280 x 800
 - b. The Somsen 301 external monitors should be set to 1024 x 768
9. Leave the color quality at 'Highest (32bit)'.

Disabling Dual Monitors

1. Click the 'Show Desktop' icon.
2. Right click in a blank area of the desktop, choose properties, Settings tab.
3. Uncheck the box "Extend my Windows desktop onto this monitor"



4. Click OK
5. If all else fails, disconnect the external monitor and reboot your computer.



Using External Monitors in Somsen 301

Potential Issues

There are several potential issues that may arise from using an external monitor.

1. Desktop icons may be rearranged, and may not return to their original position when you return to single screen mode. If this is the case, you did not follow steps 5 through 8 when you enabled the second monitor.
2. When working with an external monitor, when you make a screen shot (PrtSc) you will capture both screens. In order to capture only the active window also press the 'Alt' key. (Alt+PrtSc).
3. Toshiba m700- Fn+F5 toggles between available monitor configurations.

For a Mac, use these hints, from: <http://eduscapes.com/tap/topic7.htm> or see: <http://www-rohan.sdsu.edu/~scc/web/screencapt.html#activemac>

Press Command (Apple)-Shift-4. The pointer turns into a bull's eye.

Select the area of the screen you wish to capture. The screen is captured and saved as a PDF file called Picture 1 on your hard drive.

If you hold down the Control key in addition to the Command (Apple)-Shift-4 while clicking the bull's eye, the image is stored on the clipboard.

Assistance

If you need classroom assistance please call **Support at 507-457-5240**.

